

Boat International's global order book  
After a decade of the game with  
leading super yachts, the market  
became a walk in the park  
super yacht construction

The global authority in superyachting PODCAST SHOP SUBSCRIBE NEWSLETTERS SEARCH

NEWS FEATURES & REVIEWS YACHTS FOR SALE YACHTS FOR CHARTER TRAVEL & LUXURY PARTNER CONTENT EVENTS BOATP



8 images

All images courtesy of Cantiere del Pardo

# First unit from Cantiere del Pardo's flagship Grand Soleil model Bianca launched

30 March 2026 • Written by Emily Dawkins

Italian shipyard Cantiere del Pardo has announced the launch of the first unit from its flagship 26.2-metre [Grand Soleil Plus 80 Long Cruise \(GS Plus 80 LC\)](#) model, now christened *Bianca*.

The new build, which hit the water at the yard's dedicated Plus facilities in Fano, Italy, will now enter final outfitting before undertaking a 1,500-mile shakedown sea trial. She will then make her maiden voyage to Porto Cervo, Sardinia, to be part of the 2026 Grand Soleil Cruise.

Sarunna, to take part in the 2020 Grand Soleil Cup in May.

The GS Plus 80 LC was first unveiled in January 2025, following the success of the Grand Soleil 65 and Grand Soleil 72 as the first of the yard's new "Plus" line - a series dedicated to sailing yachts exceeding 18 metres. The yard previously noted that the new, longer model was created for "discerning sailors who desire extended voyages in total comfort and safety", with the yacht also available in a performance version.



"It's a real thrill to see the GS 80 Plus Long Cruise in her natural environment at last," said Franco Corazza, project manager for the yard's Plus line. "We do everything in-house, from lamination to launch, applying our expertise and advanced construction techniques to deliver unparalleled quality."

He continued: "This yacht represents our shared ethos of seizing the day – something that appeals to all sailors who want the ultimate bluewater cruiser that offers the highest levels of performance, style, comfort and confidence-building capability to take them over the horizon and on to new adventures."

Conceived by Cantiere del Pardo with naval architecture by Matteo Polli, the flagship sailing model is a [Nauta Design](#) home run, with the studio penning the yacht's exterior styling, interior design and layout. The Italian design trio has made use of the proven elements found in the yard's smaller models, which were also backed by the exact same design team.

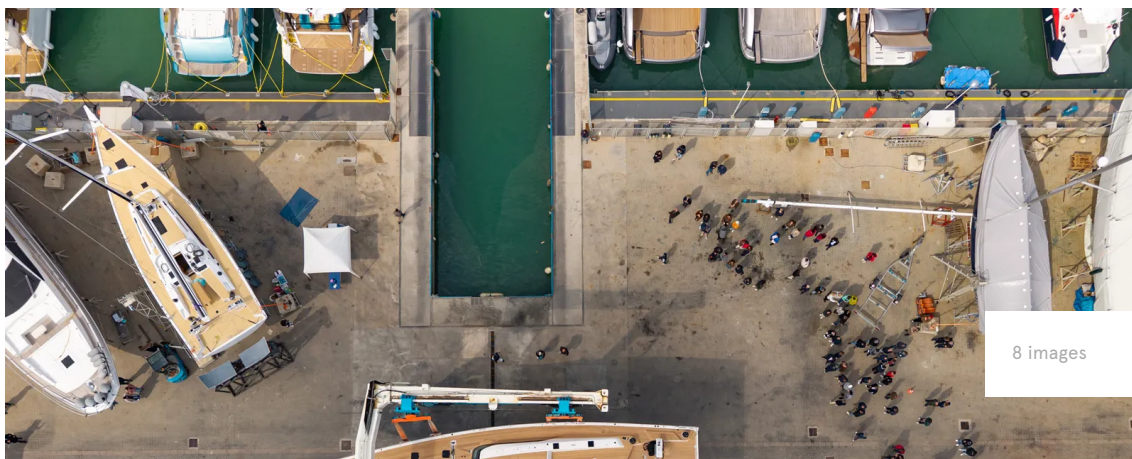
The model's hull has been carefully designed for optimised racing pedigree, with a narrow bow for smooth entry into the water that gradually widens aft to maximise internal volume and liveability below deck. The yacht's carbon rig and V-boom are capable of carrying a large sail plan designed for versatility in all conditions.

Lateral wing islands at the twin helm stations were also incorporated by Nauta, acting as comfortable seating for long passages, alongside providing optimum visibility. This is just one detail of the deck, which also sees the central cockpit distinctly separated from the manoeuvring area to offer a convivial environment for enjoying time at anchor and during cruising.

*Bianca* is fitted with twin rudders, paired with a telescopic keel, to provide a variable draught from 2.8 to 4.8 metres. This addition not only results in increased control during adverse weather conditions but also allows for easy access to shallow ports and anchorages.

An area previously claimed by the yard to "immediately capture the eye and serve as the central hub of life" is the main saloon. Spacious and bright (thanks to wraparound windows and the skylights of the coachroof), the living area is fitted with a broad L-shaped sofa with separate dining, allowing guests to bask in the panoramic views from all seats.

*Bianca* is furnished in a "contemporary luxe" interior scheme, with a cream and wood palette blended with warm oak furnishings. Four cabins provide accommodation for eight on board, comprising a forward master cabin - featuring a walk-around bed, forward-facing views and an en suite bathroom - and three guest cabins that can be configured as a double or twin. Meanwhile, a crew of four is accommodated across two cabins aft, with dedicated crew access.





Hull one of the GS Plus 80 LC is without a tender garage, instead her owners opted for additional usable space for freezers or washing machines

"The launch of this first GS Plus 80 LC represents a significant moment for Grand Soleil, as the new flagship of our fleet takes to the water, representing not just the next generation of the line but also the zenith of the handcrafted excellence that our dedicated shipyard team is known for," added Marcello Veronesi, CEO of Cantiere del Pardo. "To share this moment with the owner and his family is a real honour, and it serves as a mark of more great things to come both for this yacht and for our Plus line facility here in Fano."

The shipyard noted that a second GS Plus 80 in the Performance configuration is currently under construction at the shipyard and is scheduled for delivery at the end of 2026.

This unveiling comes not long after the yard revealed a sportier riff on its Grand Soleil flagship at the 2025 [Cannes Yachting Festival](#).

---

**Read More** / [Cantiere del Pardo unveils sporty version of Grand Soleil flagship at Cannes Yachting Festival](#)

---

### Sign up to BOAT Briefing email

Latest news, brokerage headlines and yacht exclusives, every weekday

**SUBMIT**

## More stories

[Antonini Navi launches first full-custom](#)

[Swishship, Pascoli International and Carla](#)

[Tureddi Yachts announces sale of first full](#)